

Located just steps from the Metro and nestled amongst many luxury apartment complexes, Meridian at Eisenhower. This location is 5,098 square feet of retail space.

With designated parking and outdoor seating available in this densely populated neighborhood, this space has the potential for continued growth!

2022 DEMOGRAPHICS

RADIUS	HH INCOME	POPULATION
1 mile:	\$109,327	26,242
3 mile:	\$107,211	155,435
5 mile:	\$ 88,024	485,176

TRAFFIC COUNT

135,000 vehicles daily on Capital Beltway and Mill Road

NEARBY METRO STOPS

Eisenhower Avenue Station
King Street Metro
Huntington Metro

NEIGHBORHOOD LOCATION

Eisenhower West, Huntington, Old Town
2371 Eisenhower Station, Alexandria, VA 22314

SPACE DETAILS

5,098 square feet space available

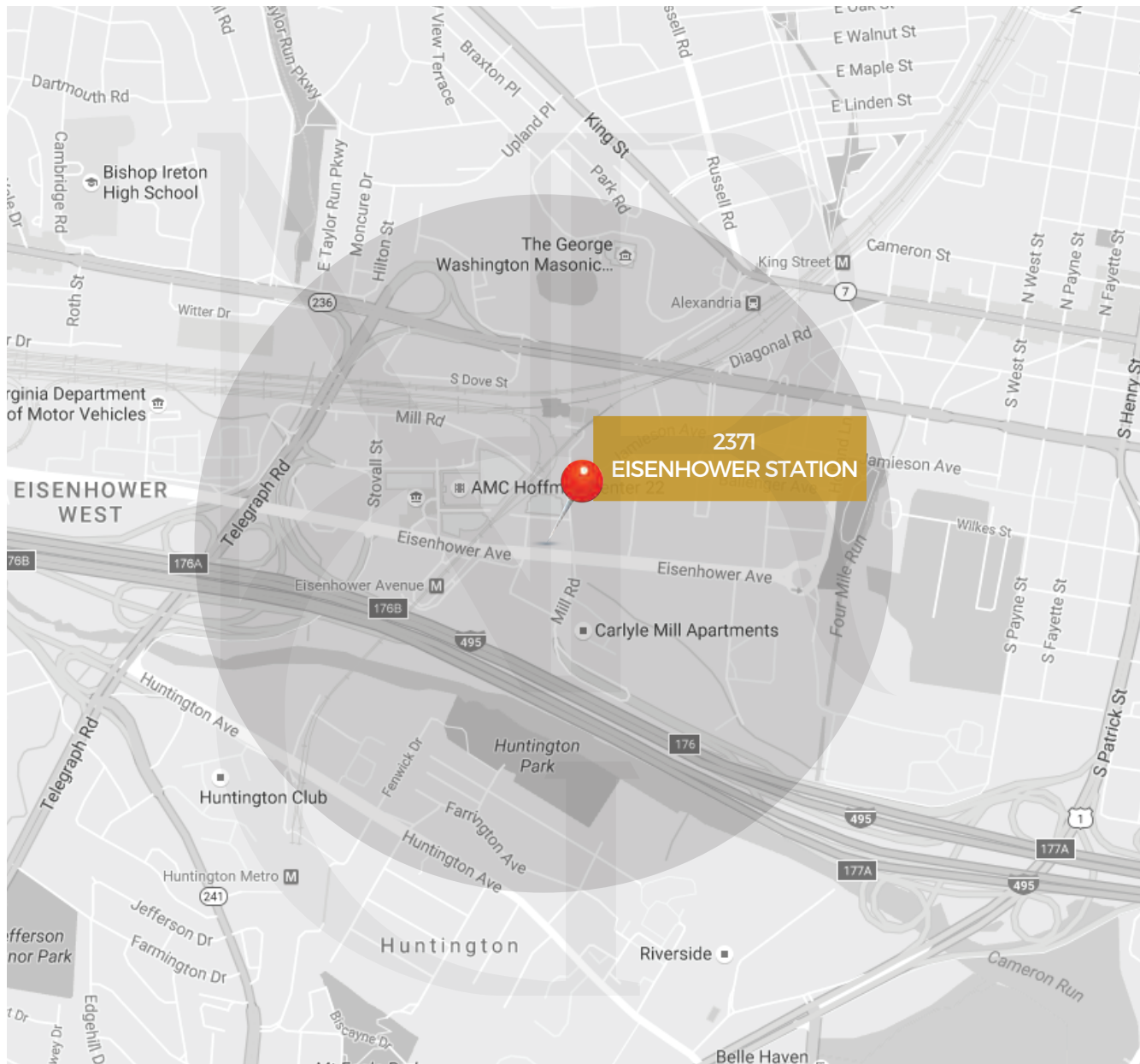


JOIN
AVAILABLE
5,098
RETAIL SPACE

2371
EISENHOWER STATION
ALEXANDRIA, VA

YOUR SUCCESS IS OUR BUSINESS.

NEIGHBORHOODRETAIL.COM



2371 EISENHOWER STATION ALEXANDRIA, VA

DEMOGRAPHICS
(2021 / 3-5 MILE RADIUS)

TOTAL POPULATION:
485,176

AVERAGE INCOME:
\$107,793

VEHICLES DAILY:
(CAPITAL BELTWAY / MILL ROAD)
135,000

*It's the perfect time to open for business
in this densely populated neighborhood
that continues to grow!*

YOUR SUCCESS IS OUR BUSINESS.

[NEIGHBORHOODRETAIL.COM](https://neighborhoodretail.com)



2,075 SF

Designated parking available | Outdoor seating available

YOUR SUCCESS IS OUR BUSINESS.

NEIGHBORHOODRETAIL.COM

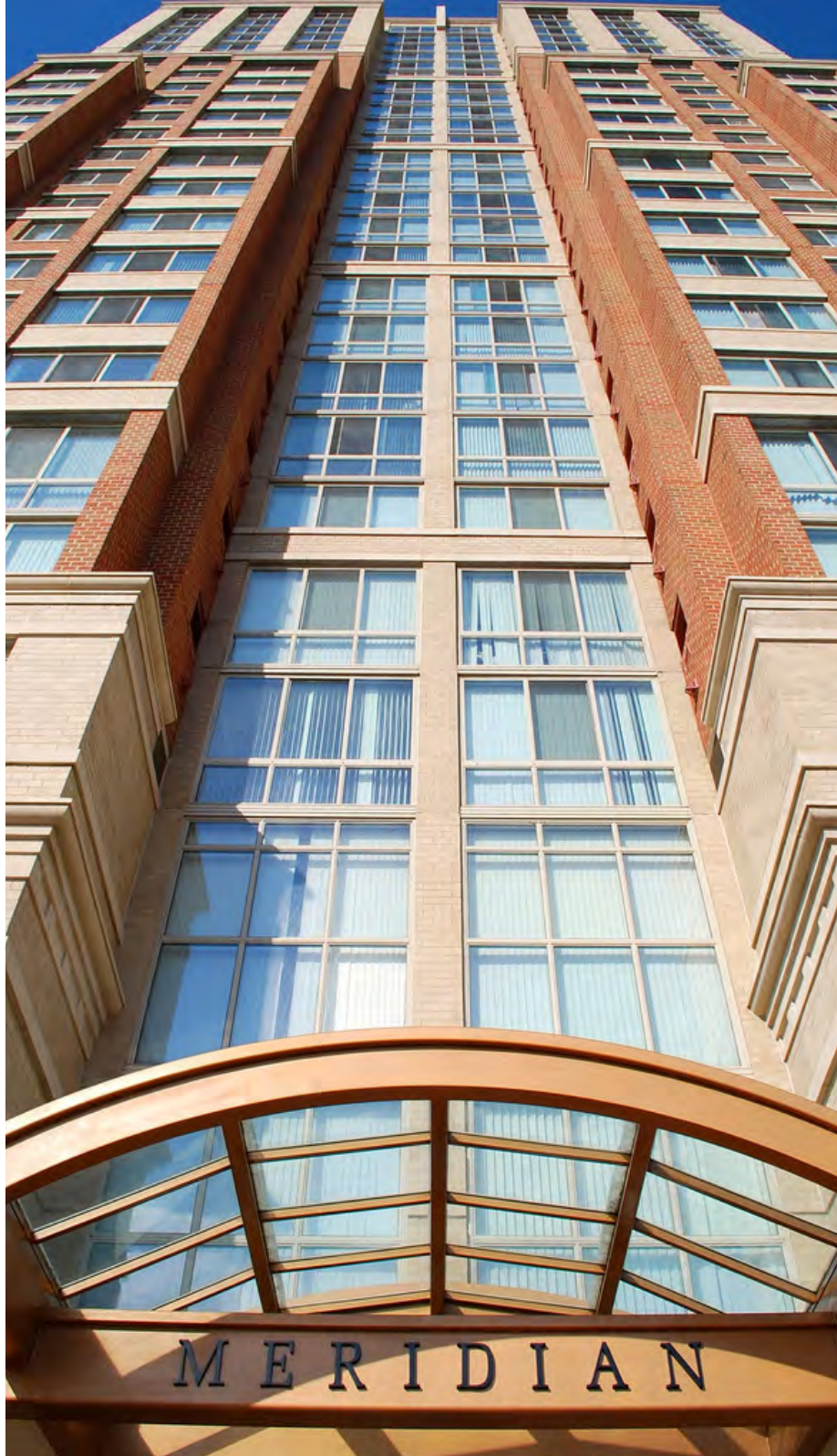
NEIGHBORHOODRETAIL.COM



2371
EISENHOWER STATION
ALEXANDRIA, VA

PLUGGED INTO YOUR NEIGHBORHOOD

NEIGHBORHOODRETAIL.COM



BETHANY SUSAN KAZABA

(202) 617.3113 : OFFICE

(302) 507.7500 : MOBILE

BETHANY@NEIGHBORHOODRETAIL.COM

YOUR SUCCESS IS OUR BUSINESS.

The information contained herein is believed to be accurate but the Landlord or Agent does not warrant or guaranty the accuracy and therefore is subject to change without notice.

NEIGHBORHOODRETAIL.COM